



THE BENSFORT
(20-05 CORNER STANDARD)
2001 SQ. FT.

THE CARNEGIE
(20-02 REVERSE)
1564 SQ. FT.

THE HIGHLAND
(20-01 STANDARD)
1402 SQ. FT.

THE MARSDALE
(20-03 REVERSE)
1704 SQ. FT.

THE MARSDALE
(20-03 STANDARD)
1704 SQ. FT.

THE HIGHLAND
(20-01 REVERSE)
1402 SQ. FT.

THE CARNEGIE
(20-02 STANDARD)
1564 SQ. FT.

THE SPILLSBURY
(20-04 REVERSE)
1903 SQ. FT.

Prices and specifications are subject to change without notice. Tile patterns may vary. Window size and location may vary. Approx. location of furnace and hot water tank. Actual usable floor space may vary from stated floor area. All dimensions are approximate. Materials, suppliers and upgrades may vary by builder. All renderings are artist's concept. E.&O.E.



ELEVATION C

S
N
M
O
T

THE
BENSFORT



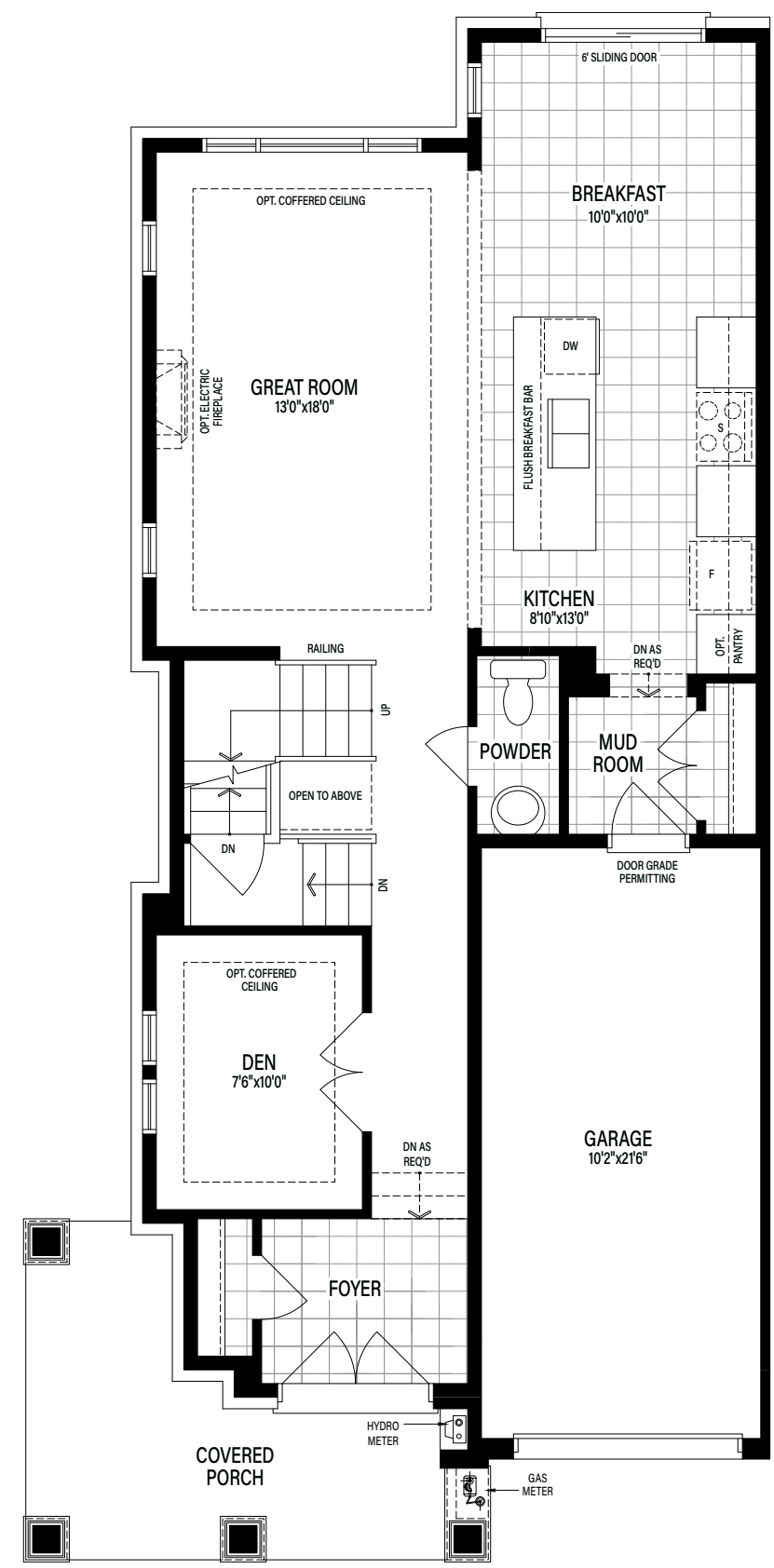
ELEVATION A 1949 SQ. FT.



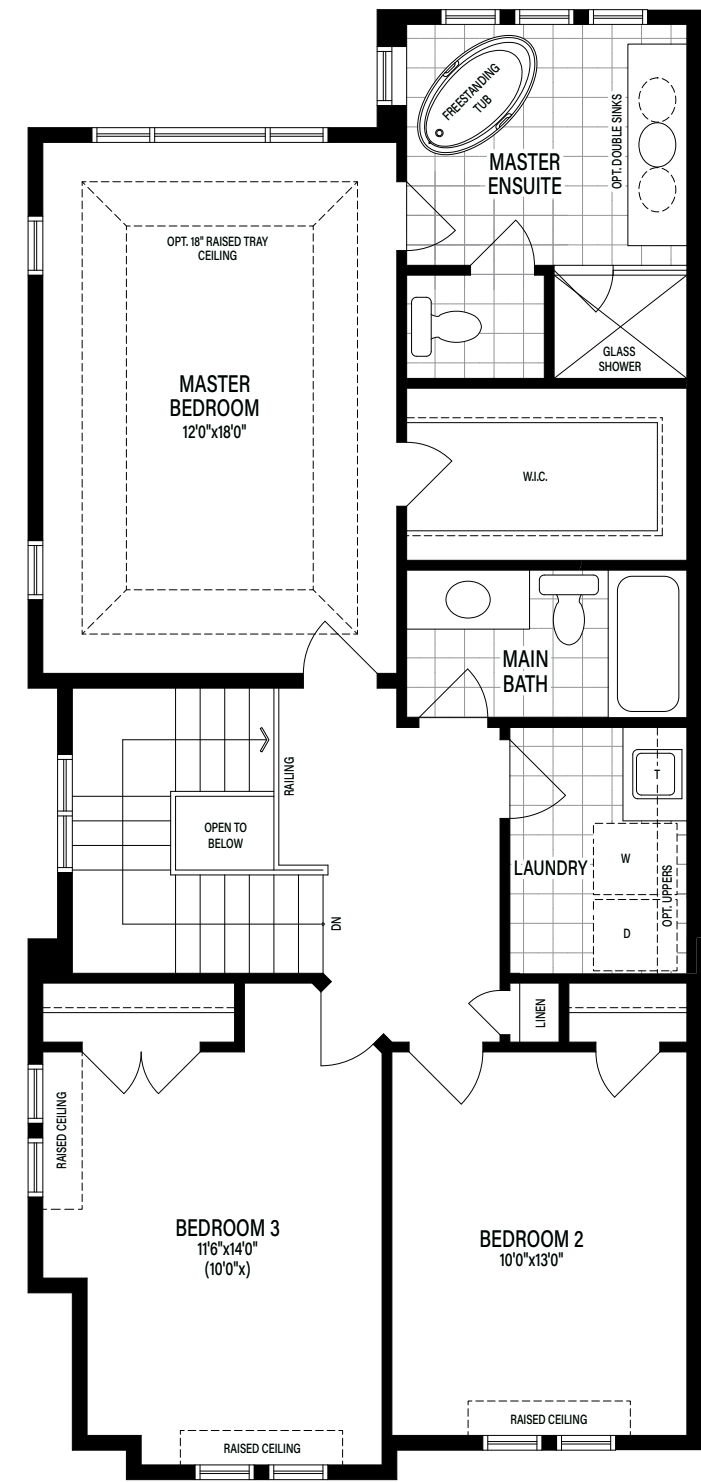
ELEVATION B 2000 SQ. FT.



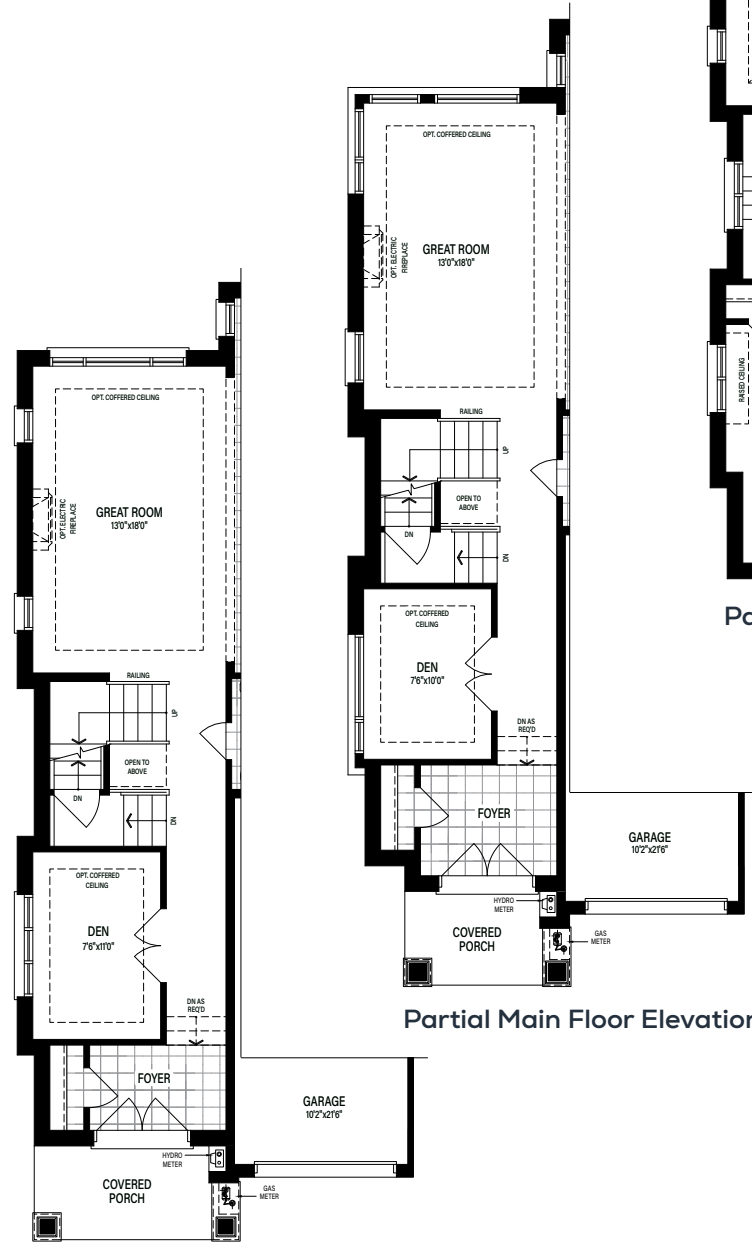
ELEVATION C 2001 SQ. FT.



Main Floor Elevation A

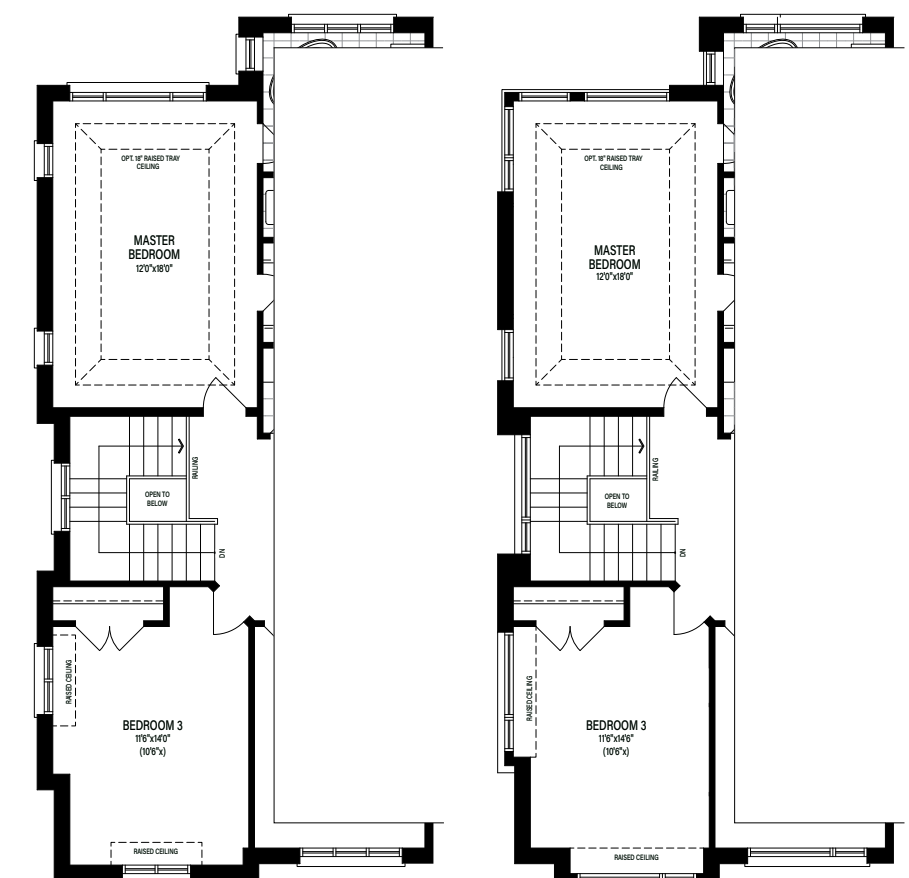


Second Floor Elevation A



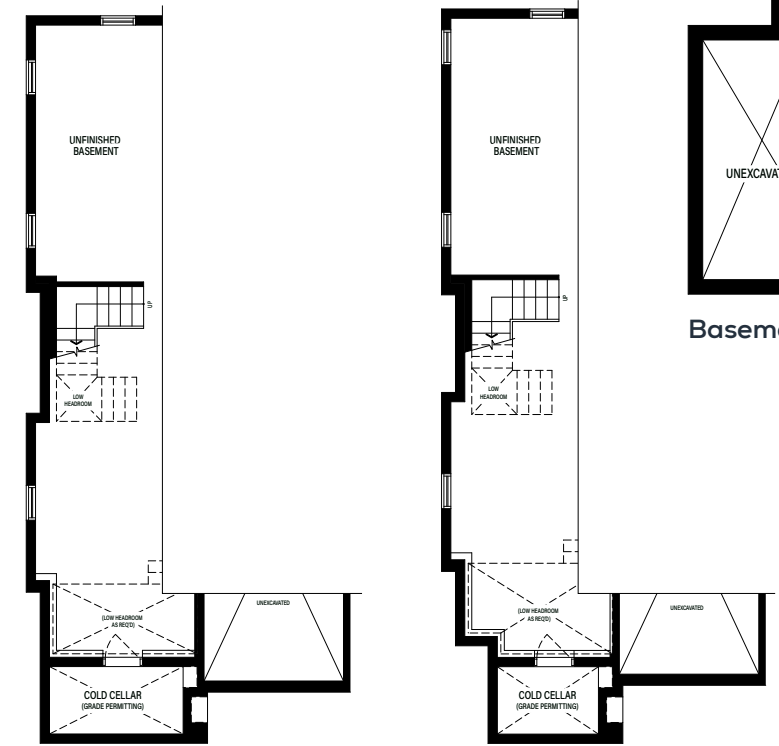
Partial Main Floor Elevation B

Partial Main Floor Elevation C



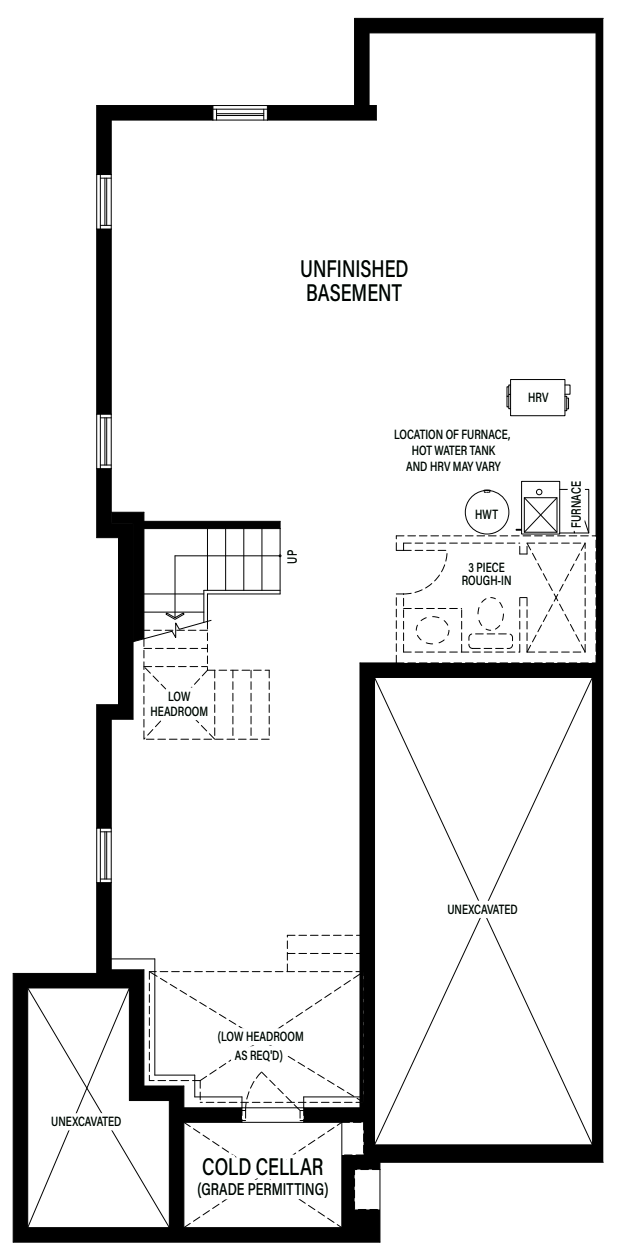
Partial Second Floor Elevation B

Partial Second Floor Elevation C



Partial Basement Elevation B

Partial Basement Elevation C



Basement Elevation A



Prices and specifications are subject to change without notice. Tile patterns may vary. Window size and location may vary. Approx. location of furnace and hot water tank. Actual usable floor space may vary from stated floor area. All dimensions are approximate. Materials, suppliers and upgrades may vary by builder. All renderings are artist's concept. E&OE.